

VANGAŽI TERMINAL

Europe's
Farthest-North
Dry Port



LOCATION

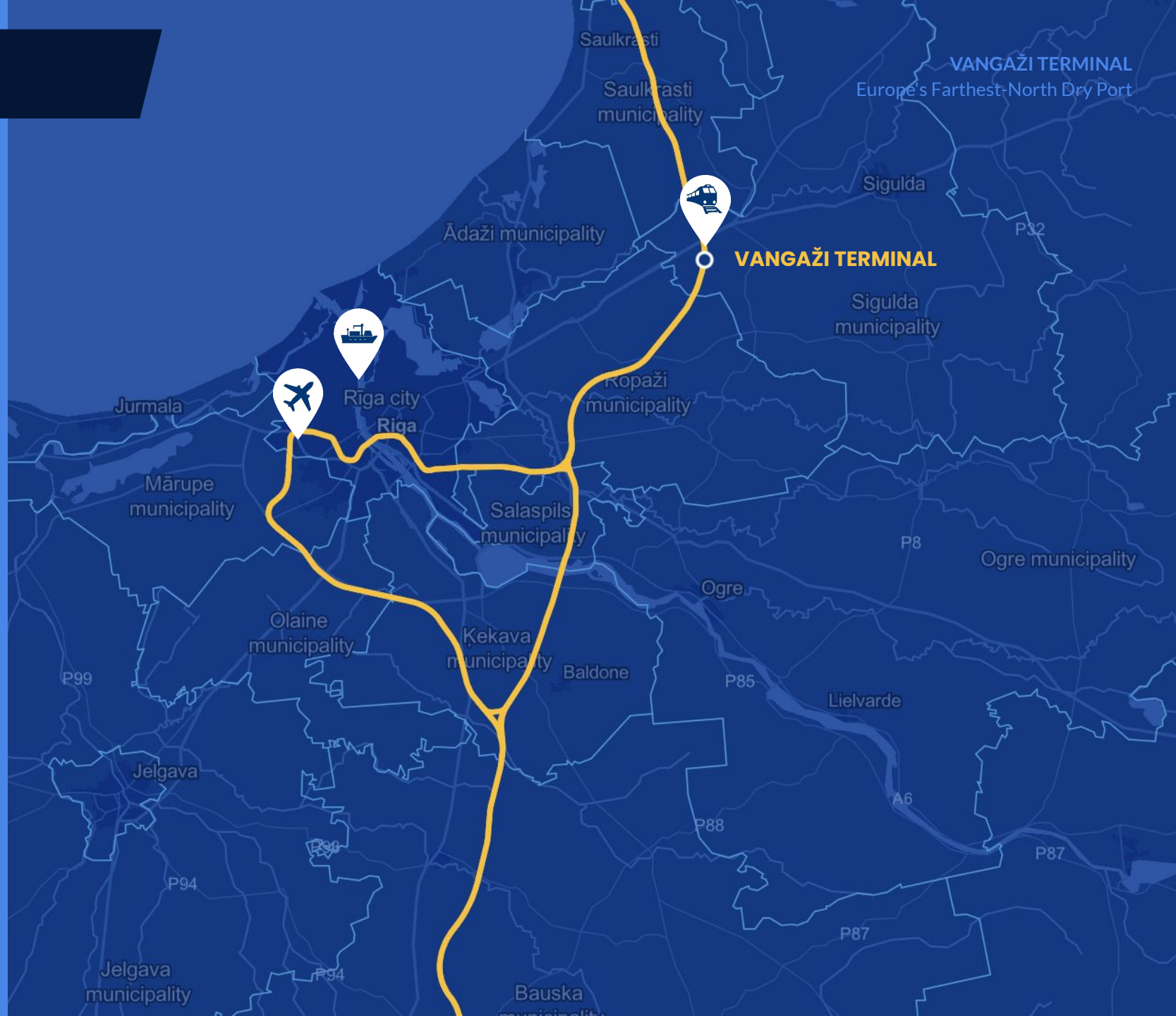
Riga Airport - 45km



Rīga Port - 37km



Vangaži railway station - 1km



Europe's Farthest-North Dry Port



Industrial zoner - all industrial activities are allowed

Suitable for manufacturing, storage and logistics activities

Unique infrastructure: by two type railroads, Pskov highway, 37km from capital Riga

Convenient current setup: ramp by the railroad, storage building, 60ha of land



Currently active operation is halted

INVESTMENTS IN TERMINAL SINCE 2017

VANGAŽI TERMINAL
Europe's Farthest-North Dry Port



BUILT / RENOVATED
OVERPASS

RENOVATED
PUMPING STATION

CLEANED AND
IMPROVED TANKS

Options for potential business operations



MULTIMODAL TERMINAL



MULTIMODAL TERMINAL

VANGAŽI TERMINAL
Europe's Farthest-North Dry Port

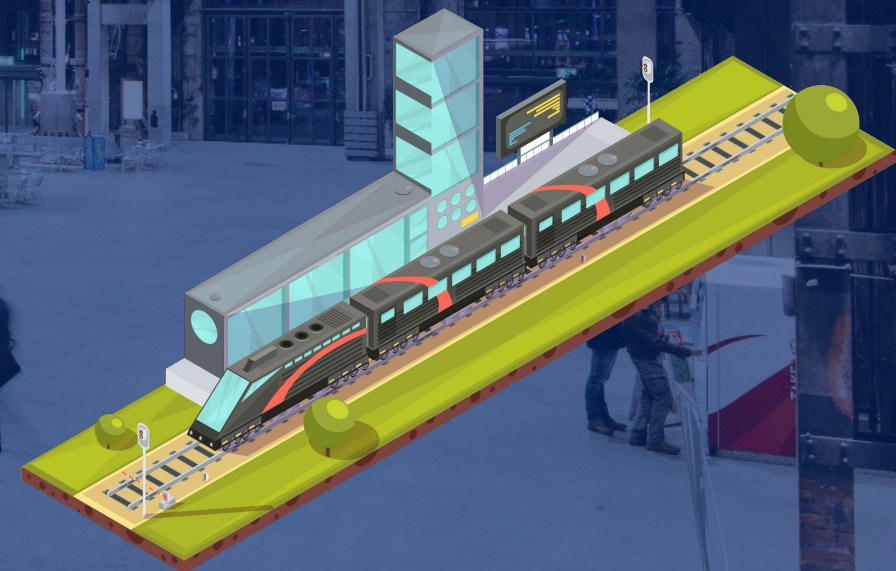
MULTIFUNCTIONAL
LOGISTICS CENTRE

CARGO
LOGISTICS

CONTAINER
LOGISTICS

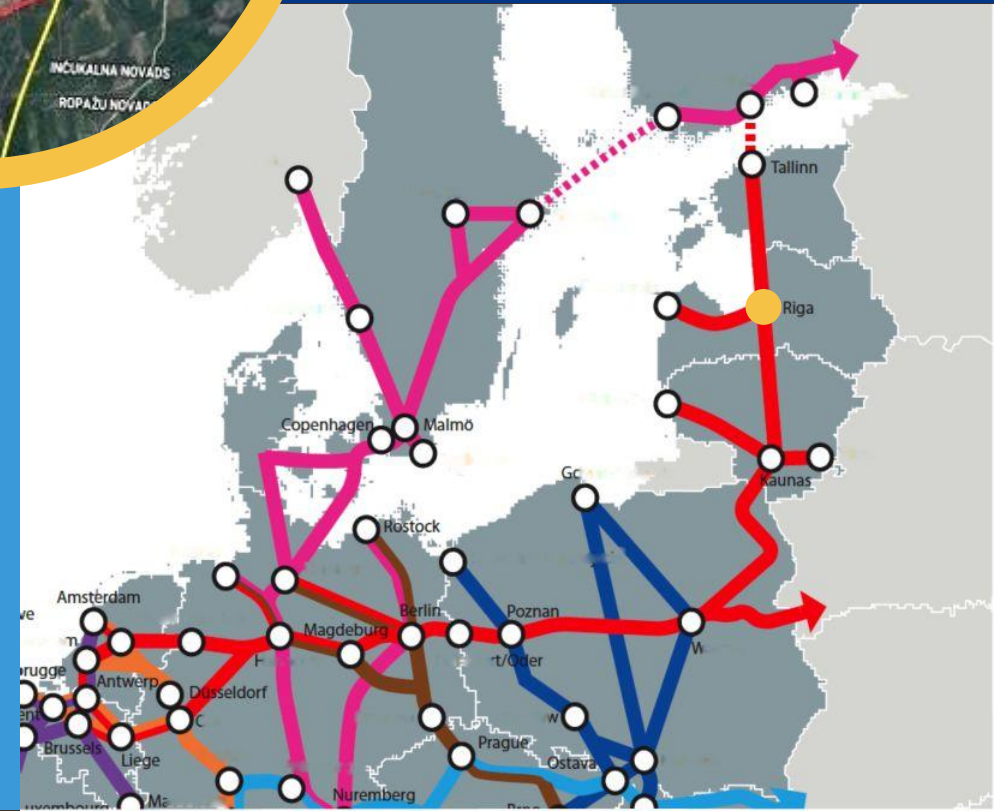
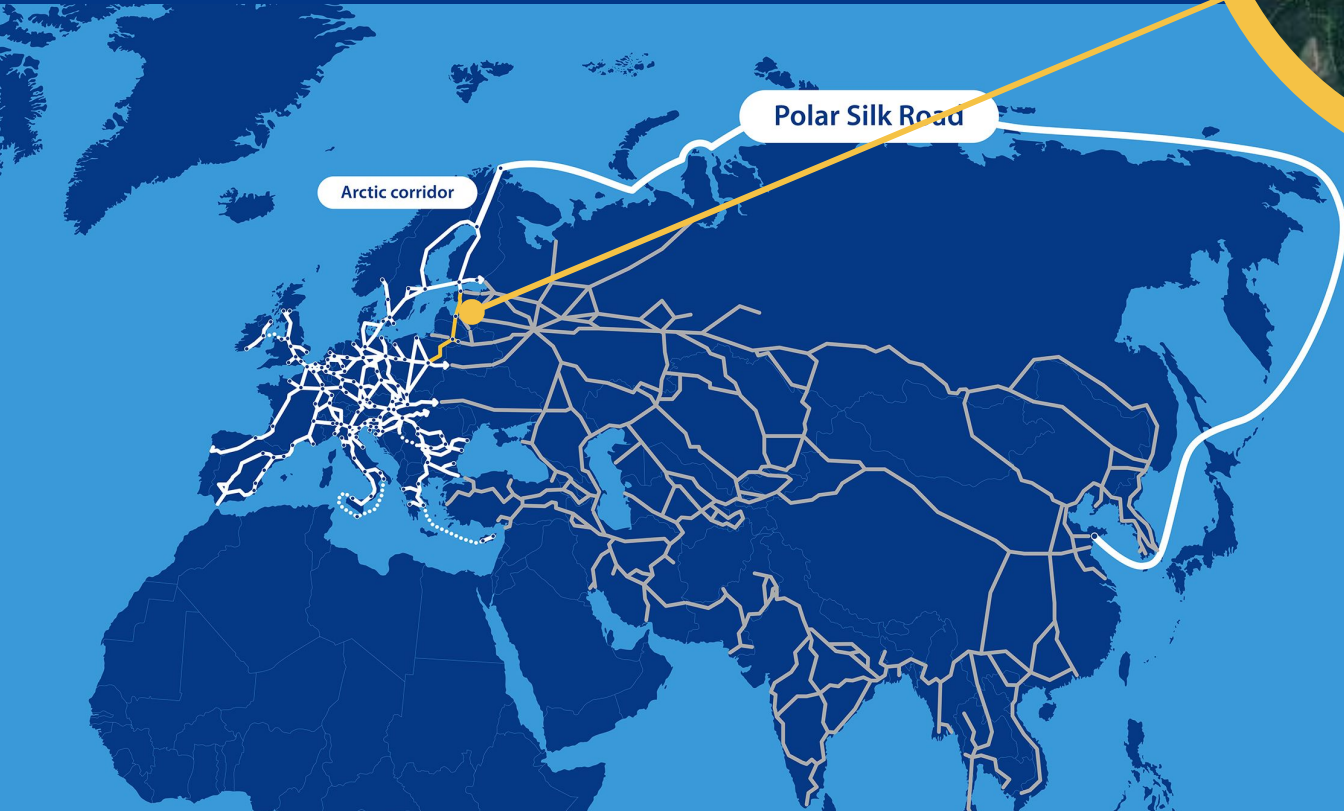
WAREHOUSE
SERVICES

CUSTOMS
SERVICES



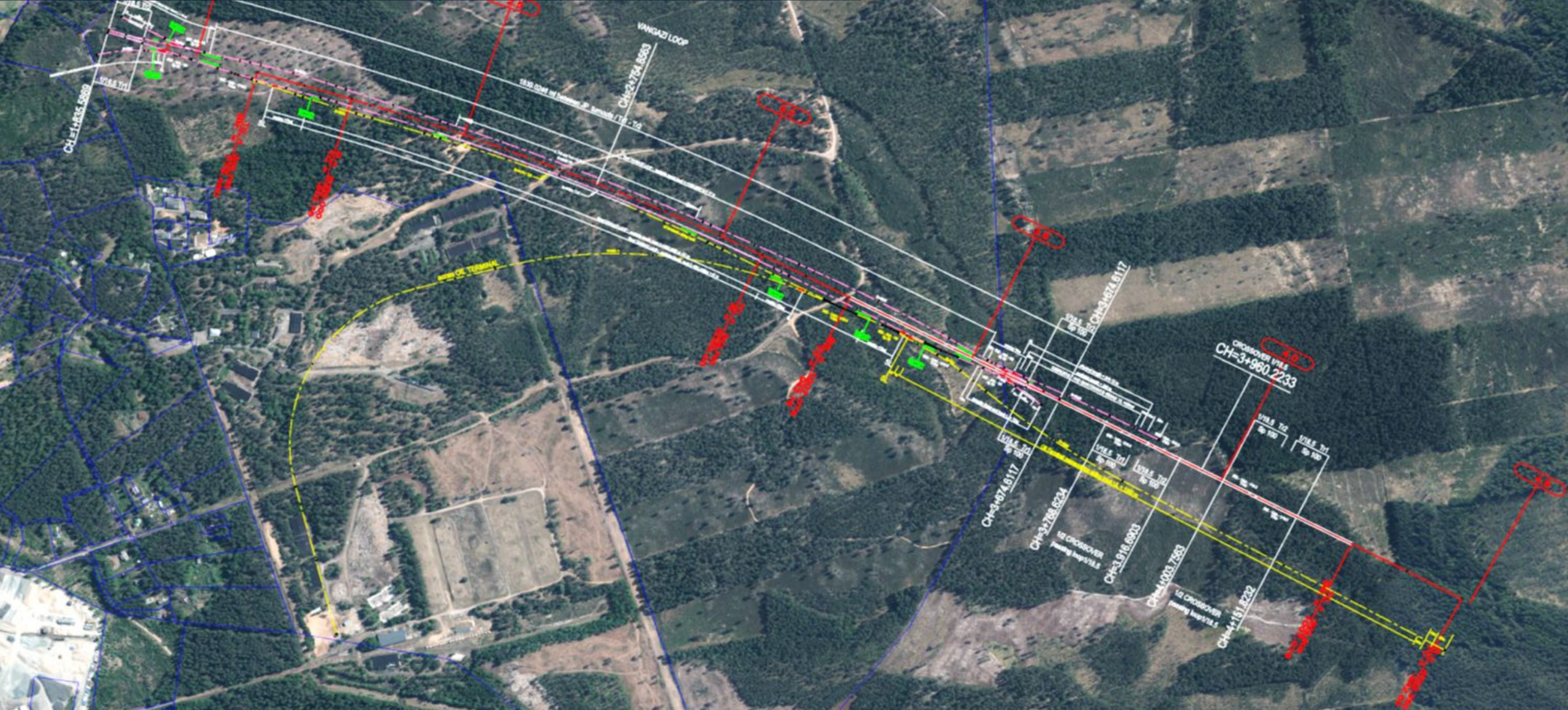
MULTIMODAL TERMINAL

VANGAŽI TERMINAL
Europe's Farthest-North Dry Port



POSSIBLE CONNECTION TO THE RAIL BALTICA RAILWAY

VANGAŽI TERMINAL
Europe's Farthest-North Dry Port



Rail Baltica cargo flow forecasts for each commodity up to 2040 (Conservative scenario, '000 Tonnes)

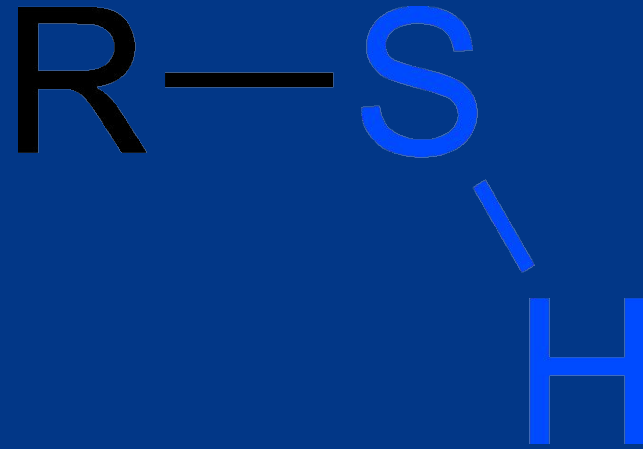
Commodities	2020	2025	2030	2035	2040
0 – Agricultural Products	0.000	23.234	101.018	109.760	119.682
1 – Foodstuffs	0.000	14.366	0.000	108.268	123.193
2 – Solid Mineral Fuels	0.000	0.000	0.000	0.000	0.000
3 – Crude Oil*	0.000	0.000	0.000	0.000	0.000
4 – Ores, Metal waste	0.000	8.834	38.866	42.687	46.557
5 – Metal Products	0.000	12.030	67.214	85.467	99.934
6 – Building minerals & material	0.000	75.996	333.985	367.560	402.952
7 – Fertilisers	0.000	0.000	0.000	0.000	0.000
8 – Chemicals	0.000	25.471	114.306	127.606	140.638
9 – Machinery & Heavy manufacturing	0.000	4.964	25.606	30.919	36.870
10 – Petroleum products	0.000	14.093	72.354	90.077	96.814
11 – Mail & Parcels	0.000	0.440	2.520	3.240	3.509
12 – Manufactured Goods	0.000	6.914	38.594	48.812	55.613
13 – Domestic & Industrial Waste	0.000	3.726	18.291	21.732	24.211
14 – Containers	0.000	1.878	37.444	64.838	69.207
15 – Other Non-Bulk	0.000	2.987	16.519	20.868	23.880
16 – Other Bulk	0.000	0.000	0.000	0.000	0.000
Total	0.000	194.934	950.122	1,121.834	1,243.060

PETROLEUM BASE OPTIONS



PETROLEUM BASE OPTIONS

VANGAŽI TERMINAL
Europe's Farthest-North Dry Port



Transloading of light
petroleum products

Storage of light
petroleum products at a
customs warehouse

Demercaptanisation

Loading/unloading of
tanker lorries

RESERVOIR PARK



RESERVOIR PARK

VANGAŽI TERMINAL
Europe's Farthest-North Dry Port

●
Loading/unloading
railway ramp for 10
tanker carriages

●
Railway carriage
loading/unloading speed:
200 m³/h

●
Petroleum base
underwent
reconstruction in
2013&2014

●
Option of storing
different products
simultaneously

●
Possibility of situating 60
tanker carriages on
railway tracks

●
All reservoirs tested and
certified by TUV NORD
Baltic

●
2x lorry filling ramp

●
All reservoirs inside
underground concrete
cylinders

●
Petroleum base
certification Category: B

RESERVOIR PARK

VANGAŽI TERMINAL
Europe's Farthest-North Dry Port

● Loading/unloading
railway ramp for 10
tanker carriages

● Reservoir volume:
1000 m³

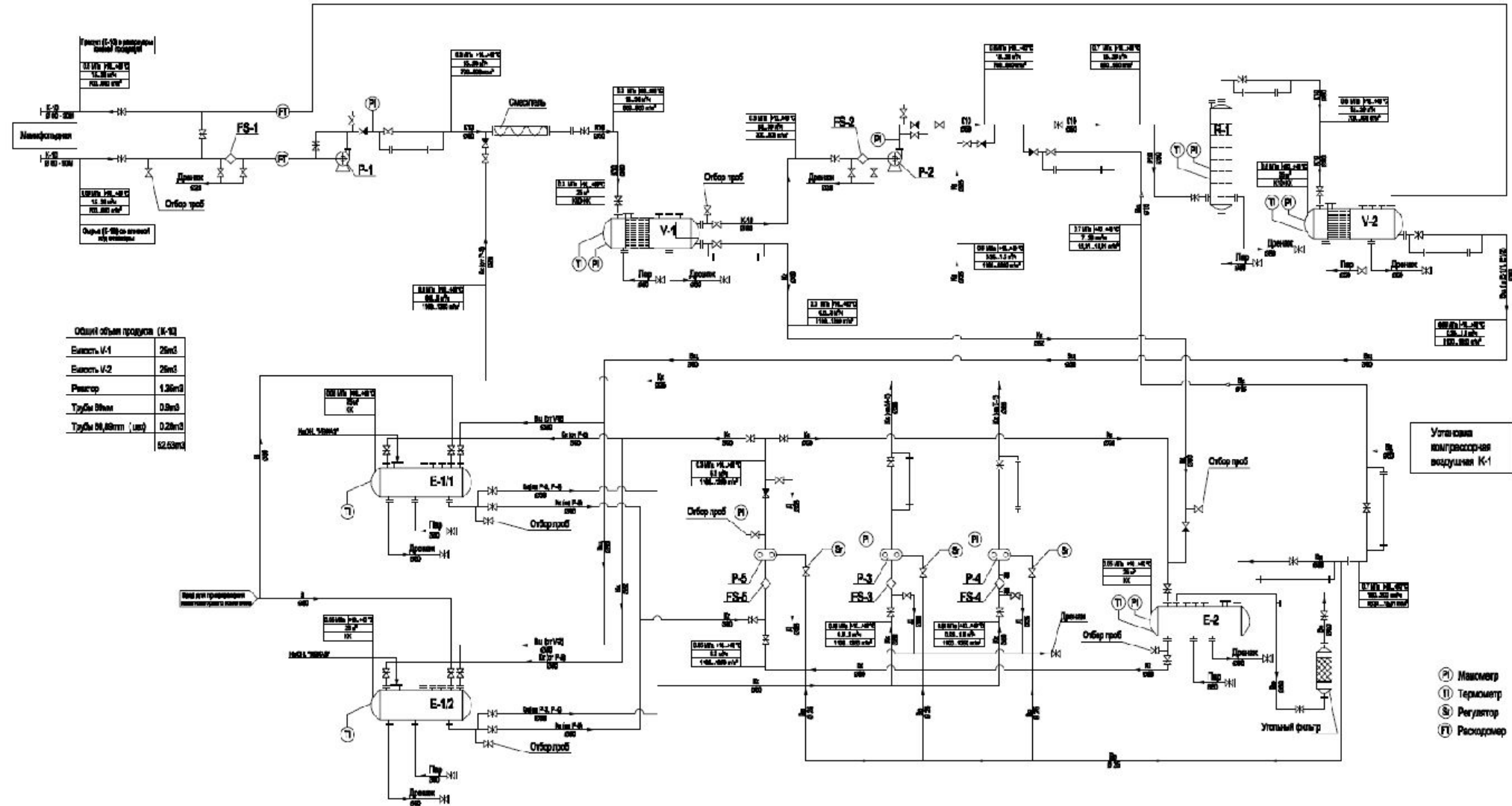
● Total reservoir
park volume:
20 000 m³



MERCAPTAN SULPHUR CONTENT REDUCTION FACILITY

MERCAPTAN SULPHUR CONTENT REDUCTION FACILITY

VANGAŽI TERMINAL
Europe's Farthest-North Dry Port



Suitable for partners and investors

Oil, gas and chemical companies
with business in manufacturing /
reloading / packing

Cargo owners for storage and loading
in geographically and functionally
unique estate

Logistics centres and companies who plan to
strategically reorient transportation
solutions (trucks – railroad)

**Trading companies and real estate
developers** for future project development

FORM OF INVOLVEMENT

VANGAŽI TERMINAL
Europe's Farthest-North Dry Port



Share capital
participation
up to 50% in
the form of
investments



Longterm rent with
improvements for
the individuals'
business specific



Full purchase of
the terminal



Future direction of Europe's Farthest-North Dry Port is up for decision!

info@vterminal.lv
+371 29 628 866

